

FREON AIR CONDITIONING - TROUBLESHOOTING

1. General

- A. Troubleshooting charts are provided to aid maintenance technicians in system diagnosis of the freon air conditioning system. Refer to Figure 101.

Figure 101 : Sheet 1 : Freon Cooling System Troubleshooting Chart

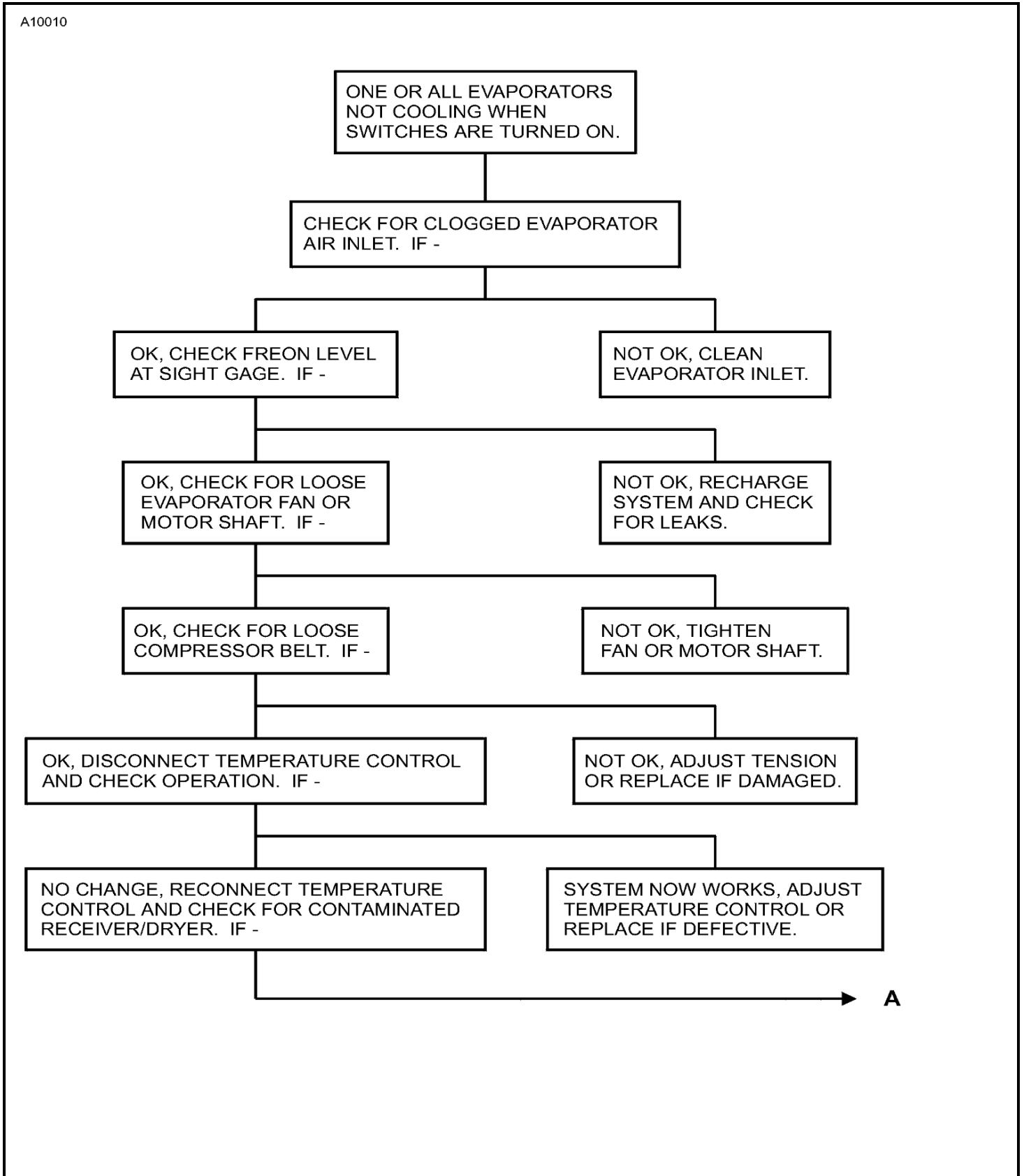


Figure 101 : Sheet 2 : Freon Cooling System Troubleshooting Chart

A10011

NOT OK, REPLACE RECEIVER/DRYER.

NOTE: IF HIGH SURGES OCCUR ON BOTH THE HIGH AND LOW GAGES OF CHARGING MANIFOLD DURING CHARGING, CHECK RECEIVER/DRYER FOR CONTAMINATION. THE RECEIVER DRYER CAN BE CHECKED FOR CONTAMINATION BY FEELING INLET AND OUTLET LINES. IF OUTLET LINE IS COLDER TO THE TOUCH THAN INLET LINE, THE RECEIVER DRYER IS CONTAMINATED AND NEEDS REPLACEMENT.

IF THE SYSTEM IS OPENED TO THE ATMOSPHERE, STANDARD PRACTICE IS TO REPLACE THE RECEIVER/DRYER.

OK, REPLACE EXPANSION VALVE.

NOTE: IF ONE EVAPORATOR IS COOLING AND THE OTHERS ARE NOT, CHECK FOR ADEQUATE AIR FLOW ACROSS EVAPORATOR. IF AIR FLOW IS SATISFACTORY, CHECK EXPANSION VALVE. THE EXPANSION VALVE CAN BE CHECKED BY FEELING SUCTION LINE. IT SHOULD BE VERY COLD TO THE TOUCH, IF NOT, DISCHARGE SYSTEM AND REPLACE EXPANSION VALVE.

A →

Figure 101 : Sheet 3 : Freon Cooling System Troubleshooting Chart

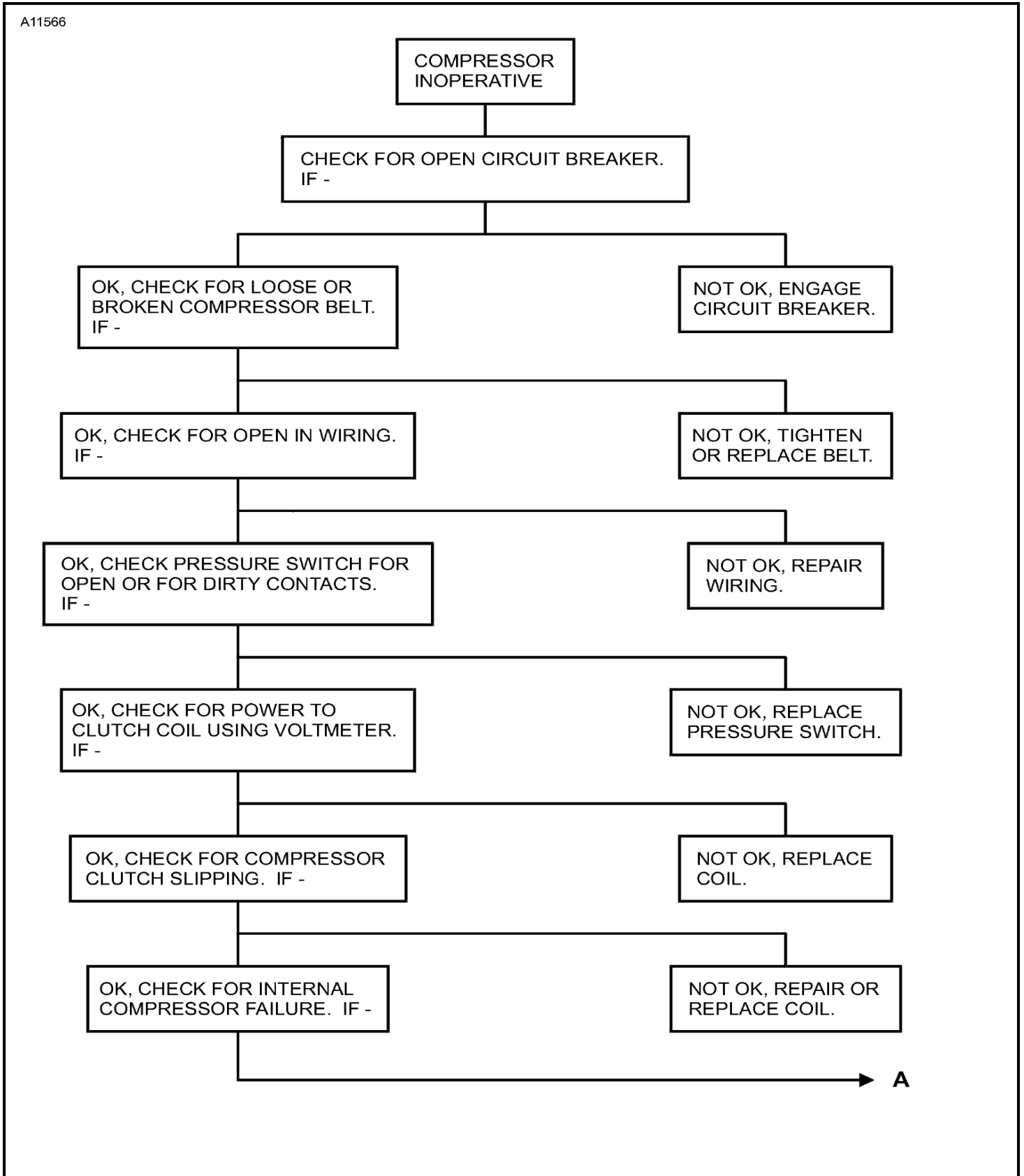


Figure 101 : Sheet 4 : Freon Cooling System Troubleshooting Chart

A11567

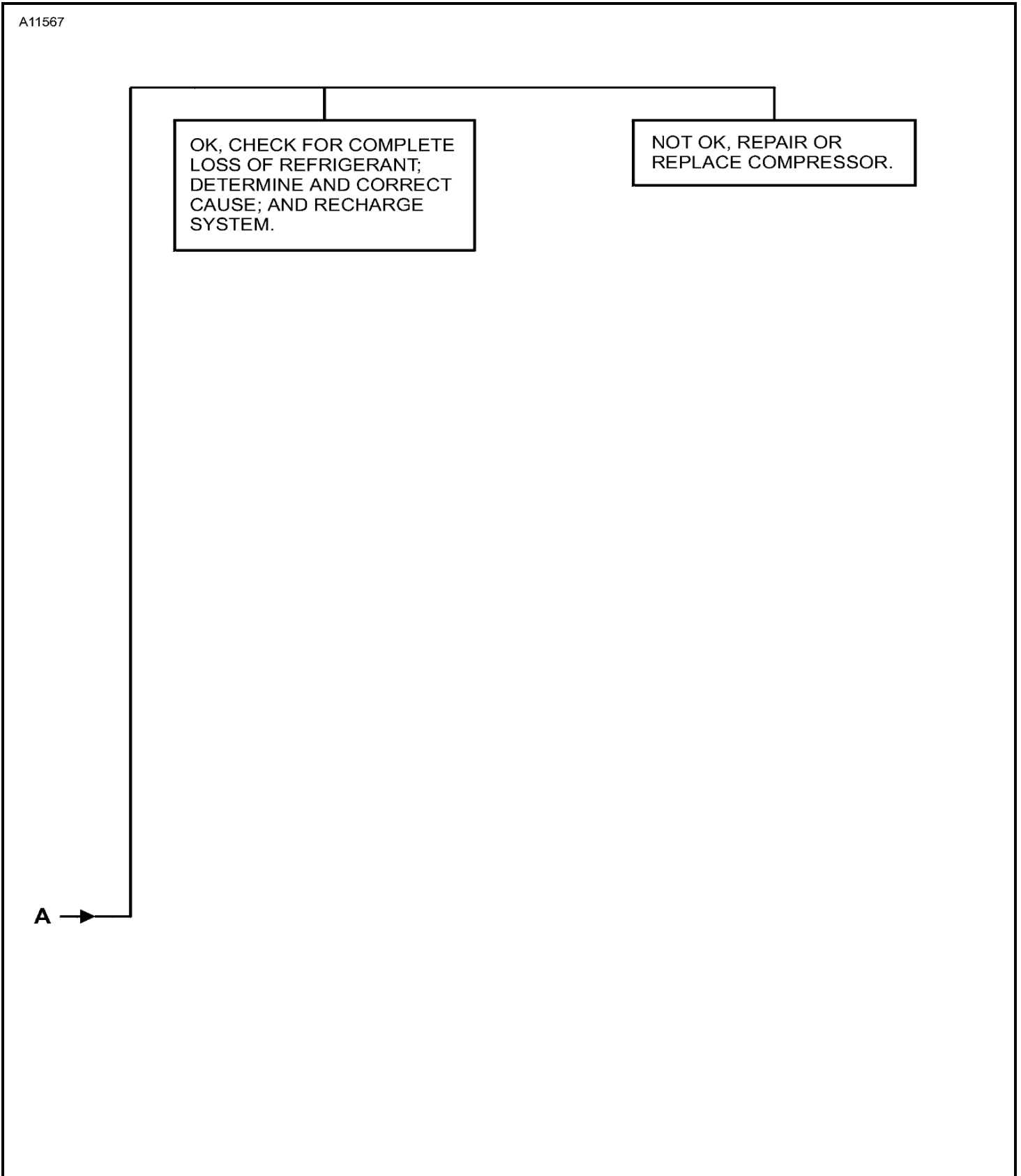


Figure 101 : Sheet 5 : Freon Cooling System Troubleshooting Chart

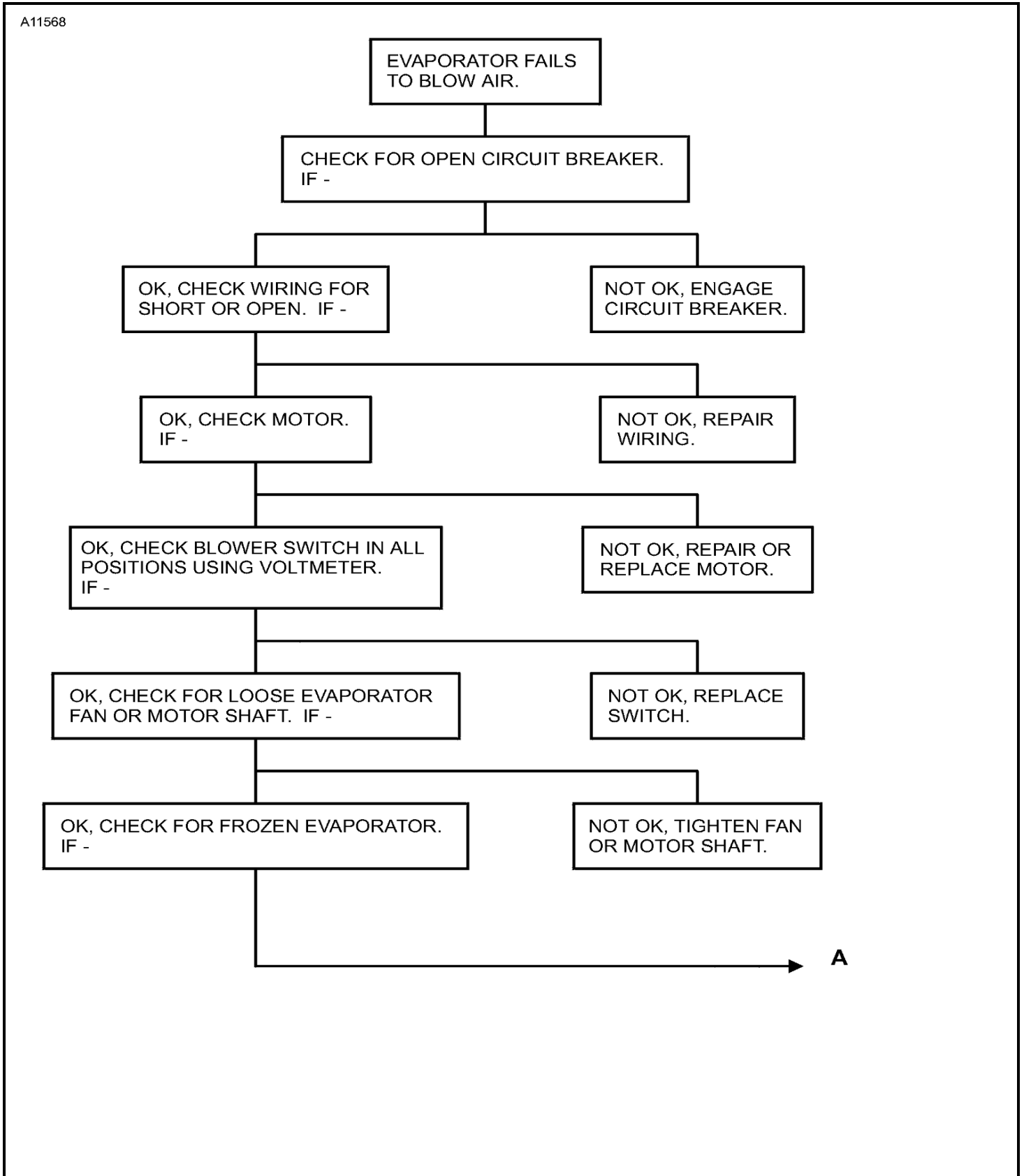
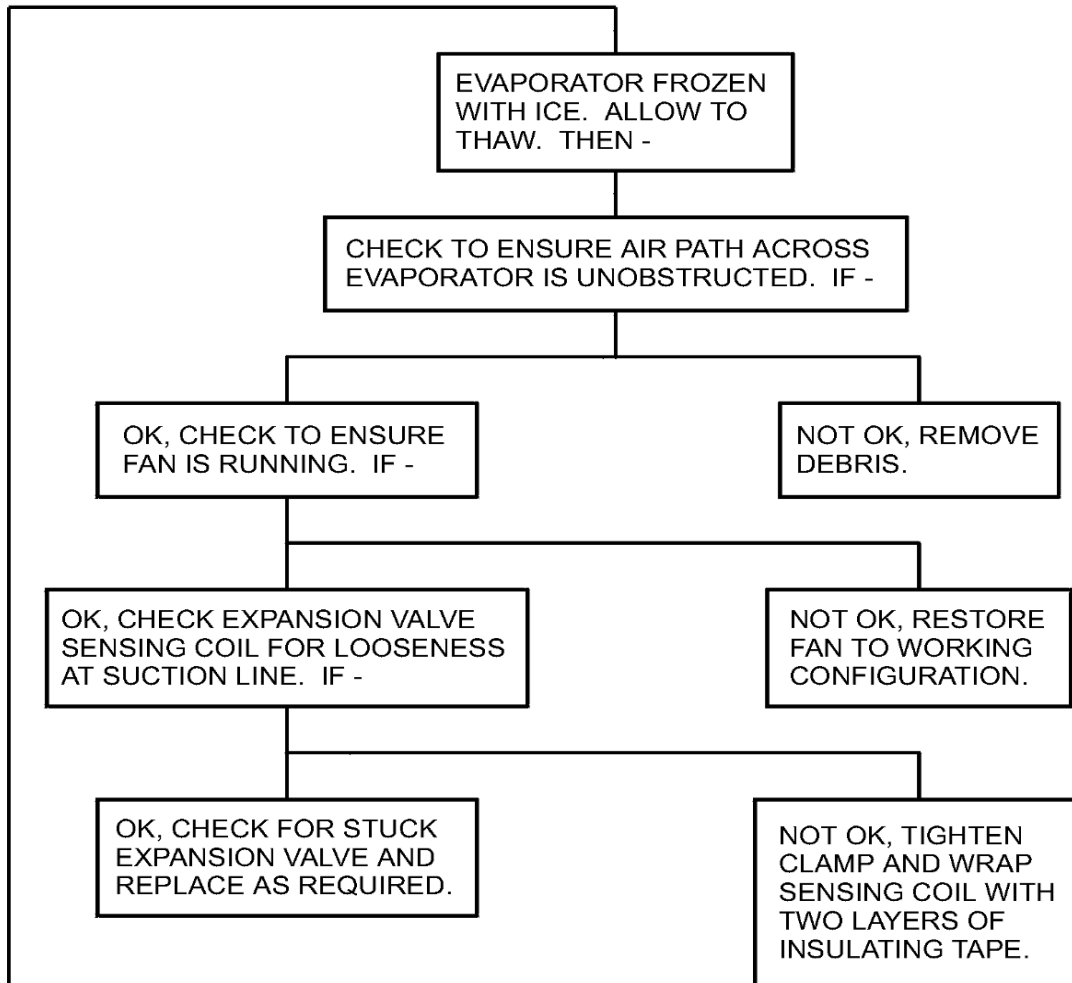


Figure 101 : Sheet 6 : Freon Cooling System Troubleshooting Chart

A11569



A →

Figure 101 : Sheet 7 : Freon Cooling System Troubleshooting Chart

A11570

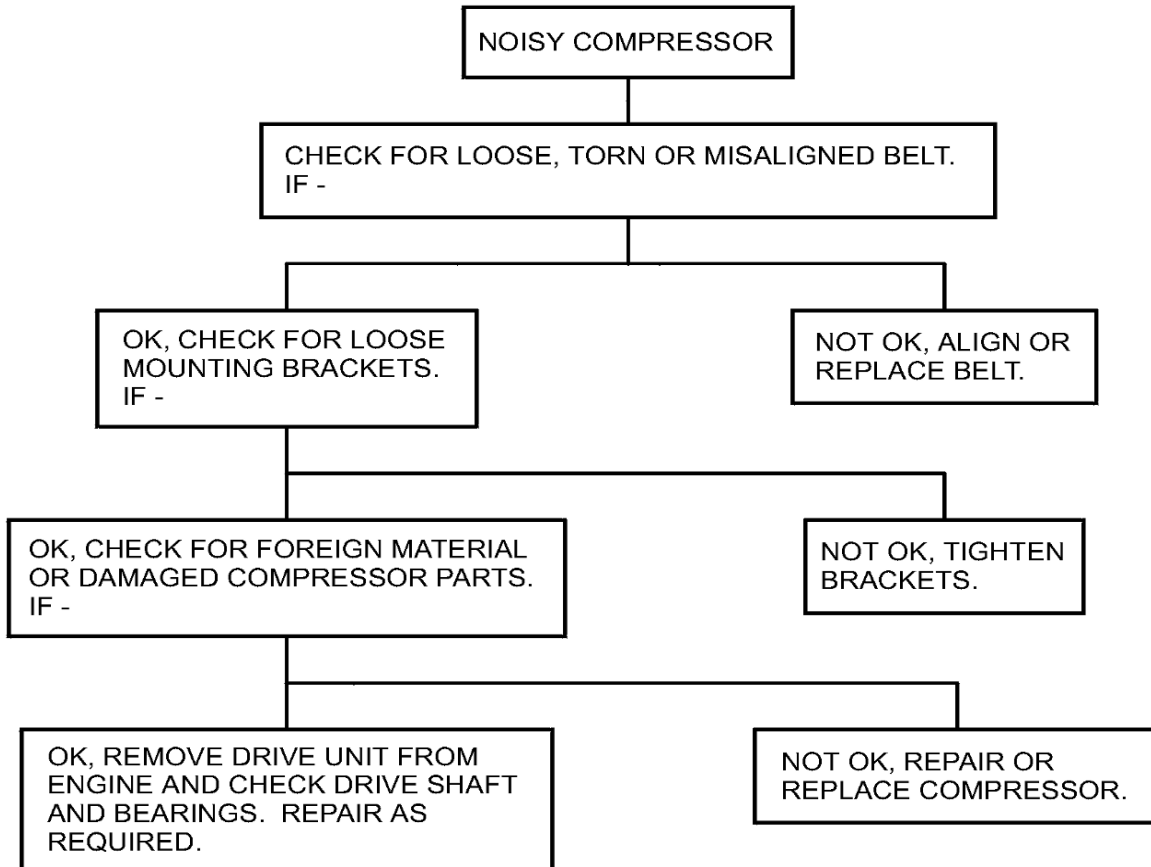


Figure 101 : Sheet 8 : Freon Cooling System Troubleshooting Chart

A11571

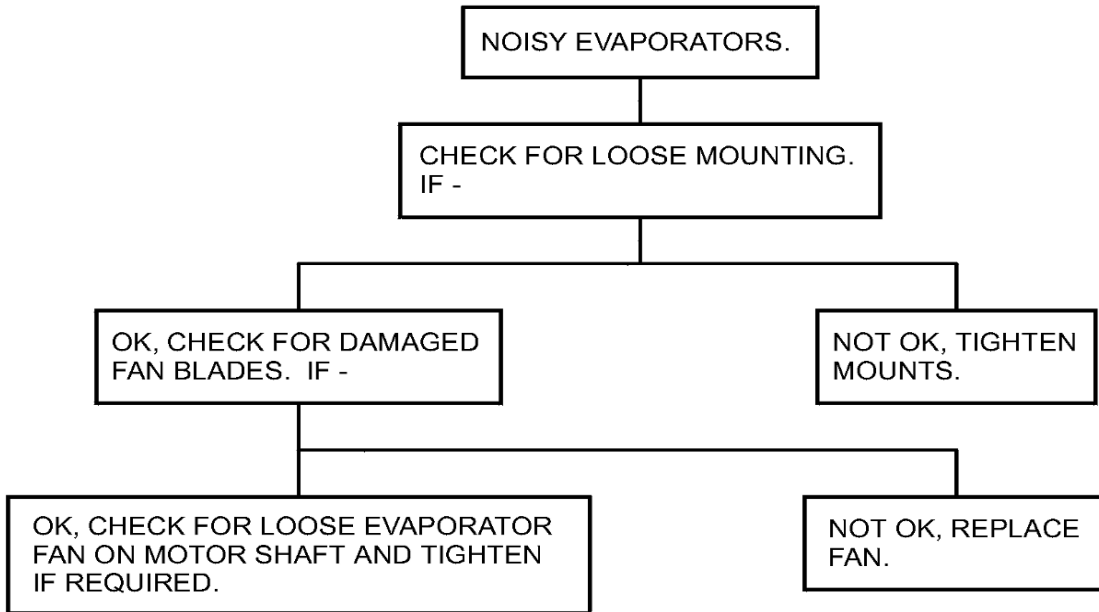


Figure 101 : Sheet 9 : Freon Cooling System Troubleshooting Chart

A11572

